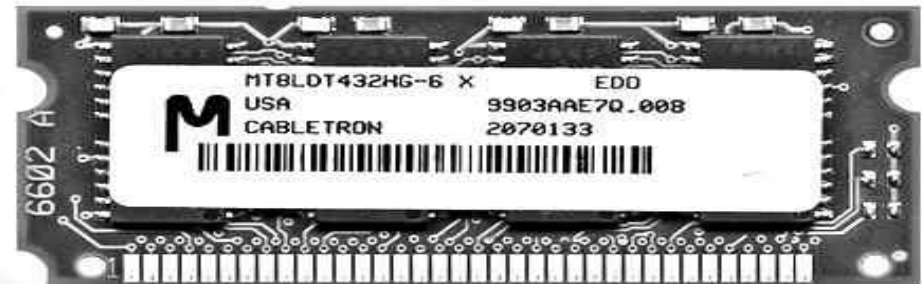
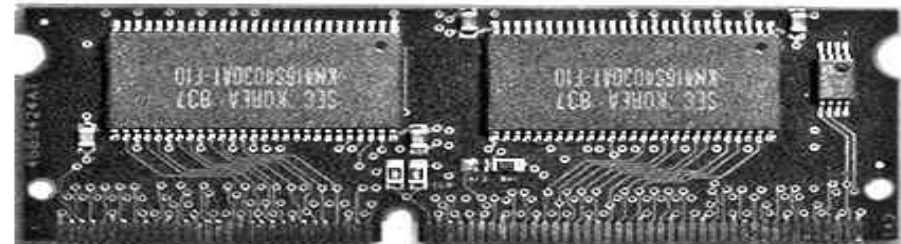


NoteBook RAM

72 pin SO-DIMM



144 pin SO-DIMM



160 pin
RDRAM RamBUS



COMPUTER HARDWARE

raphael.deviantart.com

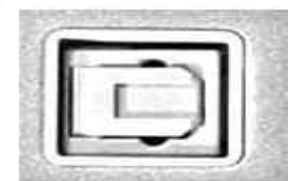
Hard Drives



1.8" ZIF IDE/CF - 40 pin



1.8" IDE/CF - 50 pin



Optical
Audio
"Toslink"



USB
1.0/1.1

RDWARE CHART

Ports



Firewire
2.0



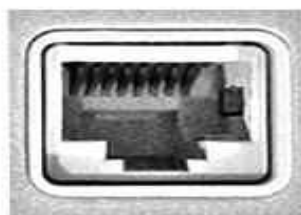
Firewire
4 pin
iLink



Firewire
400
1394a



Firewire
800/3200
1394b/c



Ethernet
8P8C
common:RJ-45



Modem
RJ-11



Apple
Desktop
Bus - ADB

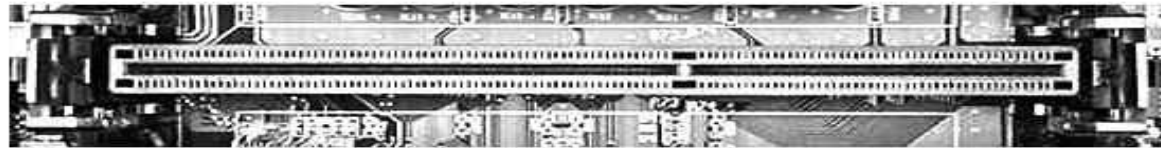


Mac
Serial

Processor Card Slots



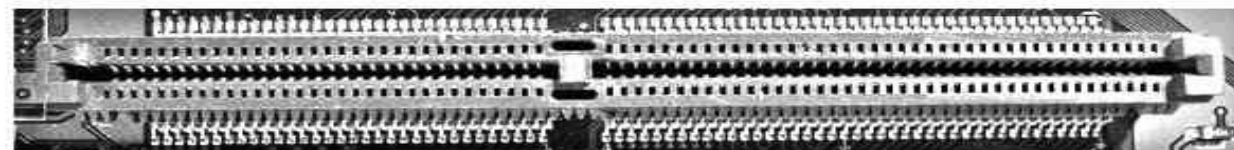
Slot 1 / SC242 - Intel Celeron SEPP, Pentium II, Pentium III - 242 pins



Slot A - AMD Athlon - 242 pins



Slot 2 / SC330 - Intel Pentium II Xeon, Pentium III Xeon - 330 pins



601/604 Mac Processor Slot - 146 pins

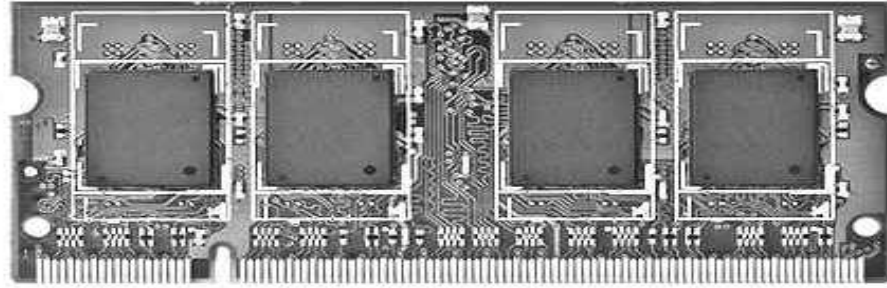
SO-RIMM



200 pin DDR
SO-DIMM



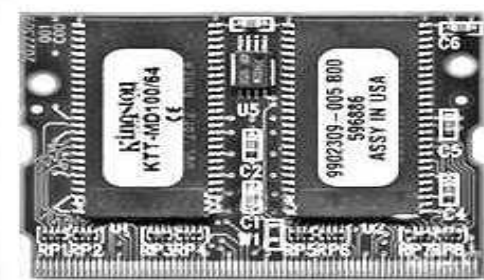
200 pin DDR2
SO-DIMM



204 pin DDR3
SO-DIMM



144 pin
MICRODIMM
PC100/133



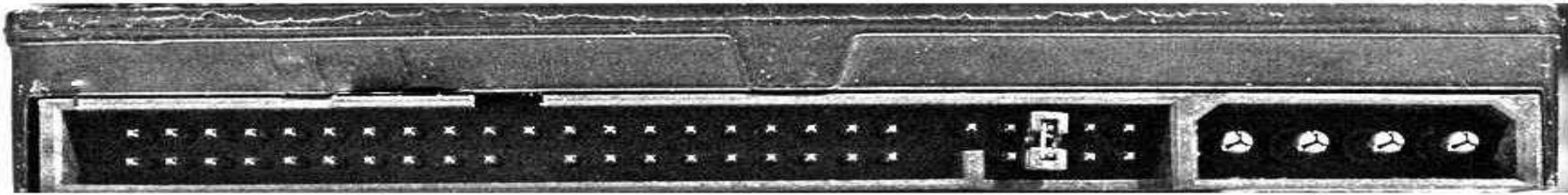
172 pin



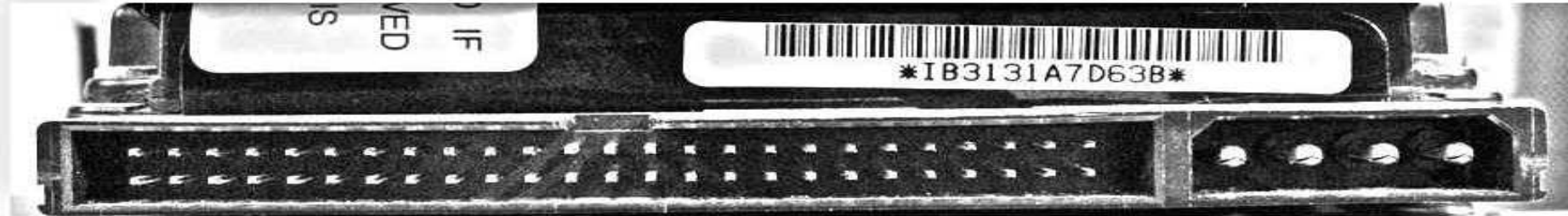
Laptop/Desktop SATA - 7 pin



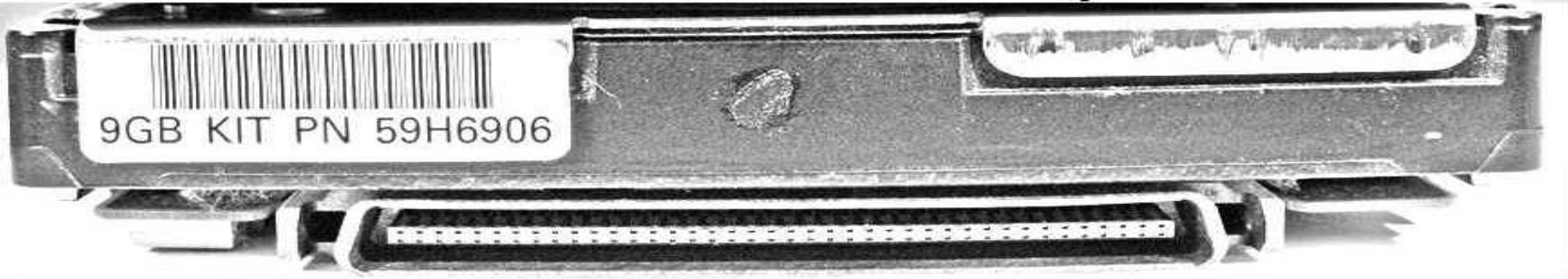
2.5" Laptop IDE - PATA - 44 pin



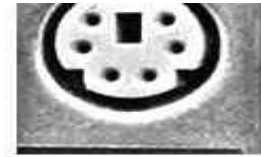
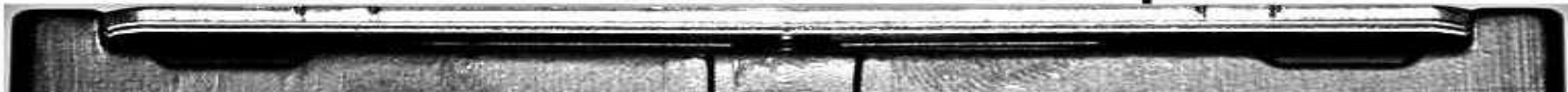
3.5" Desktop IDE - PATA - 40 pin



SCSI - IDC - 50 pin



SCSI - SCA - 80 pin



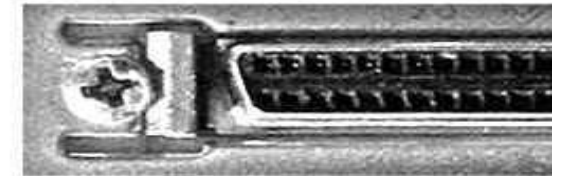
PS/2



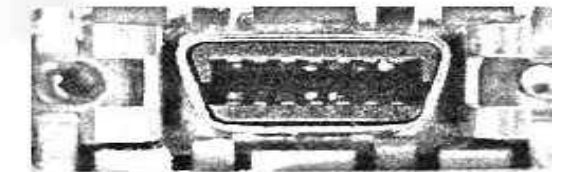
USB
3.0



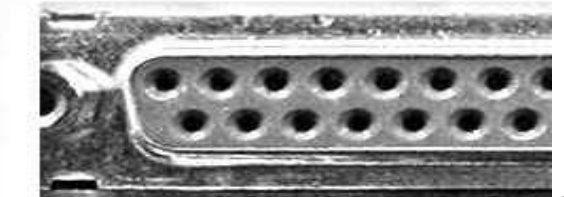
Centronics Pa



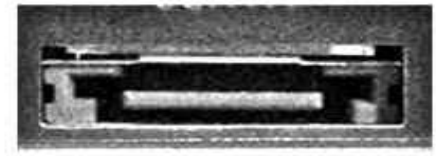
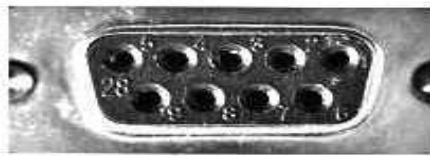
50 pin



AAUI



re



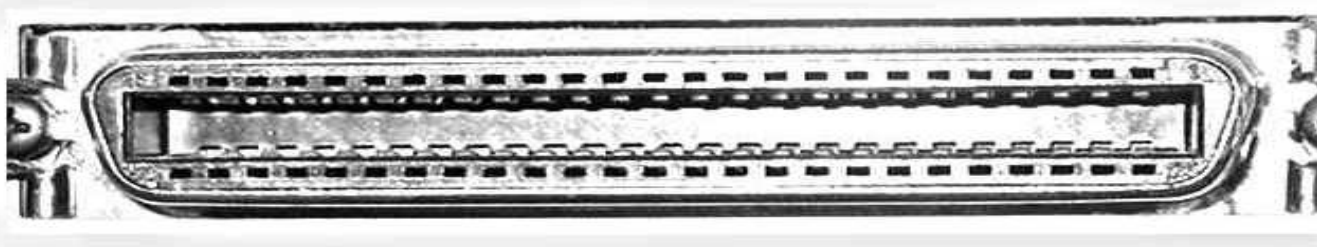
A

DE-9F

DB-25 Serial/Com Port

DE-9 Serial RS232

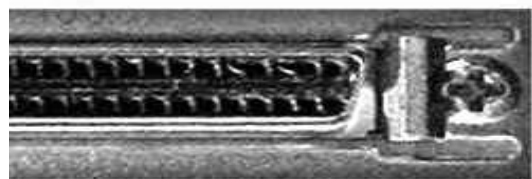
e-SATA



Parallel 36tpin

Centronics SCSI 50pin

AT Keyboard



SCSI 2

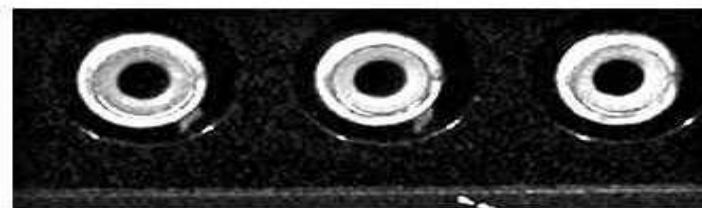
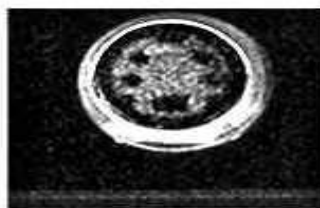
Surround sound

stereo/Headphones

Line In

Mic

Digital Audio RCA plug style

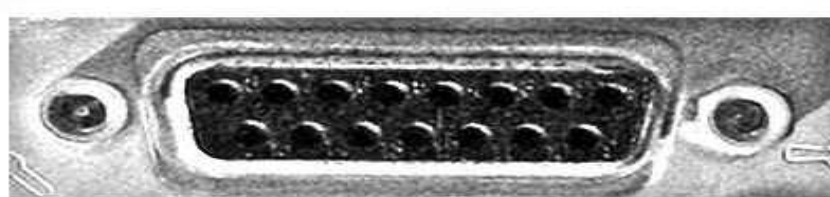


Composite Audio/Video

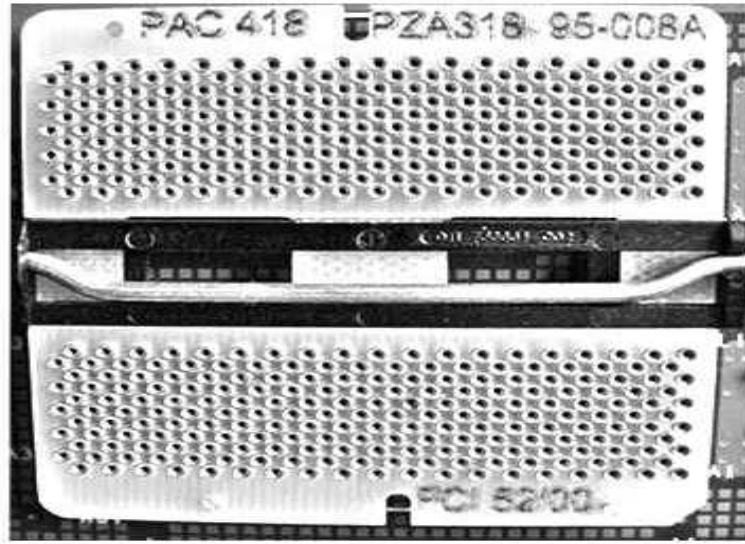
S-Video

Component Video

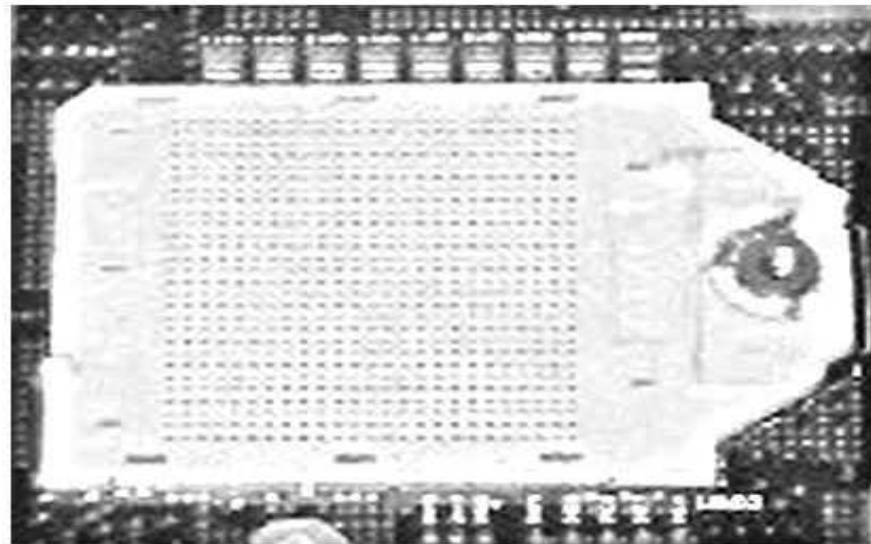
F-Connector RF/COAX



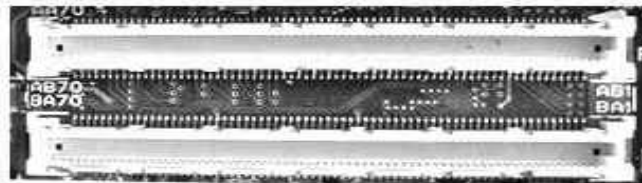
Processor Card Sockets



PAC 418
Intel Itanium - 418 pins



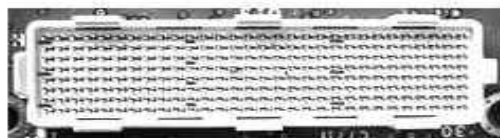
PAC611/Socket 700
Intel Itanium 2, HP PA-RISC 8800 and 8900
611 pins



MMC-1 280 pins



MMC-2 - 400 pins

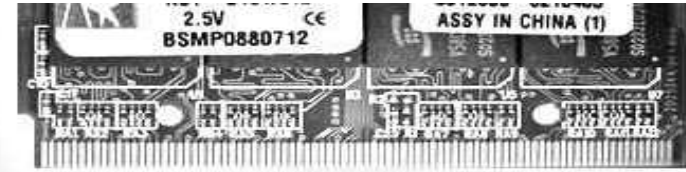


Micro-cartridge - 240 pins

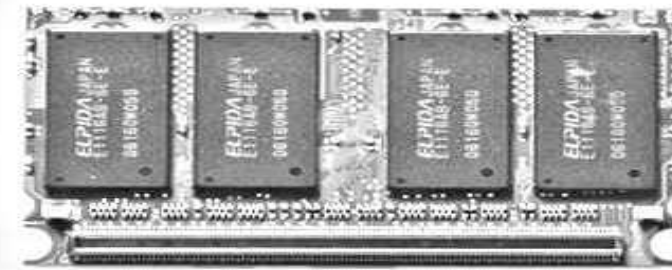


Apple G3/G4/G5
Processor card socket - 300 pins

MICRODIMM
DDR/DDR2



214 pin
MICRODIMM
DDR2

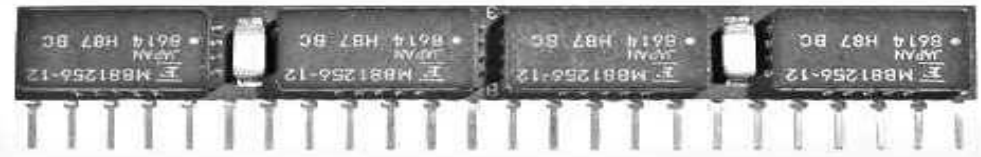


Desktop Ram

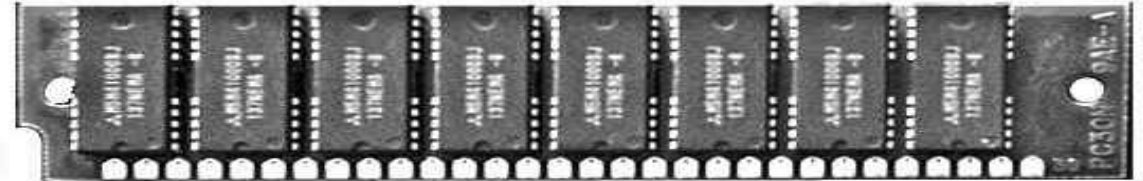
DIPP Memory



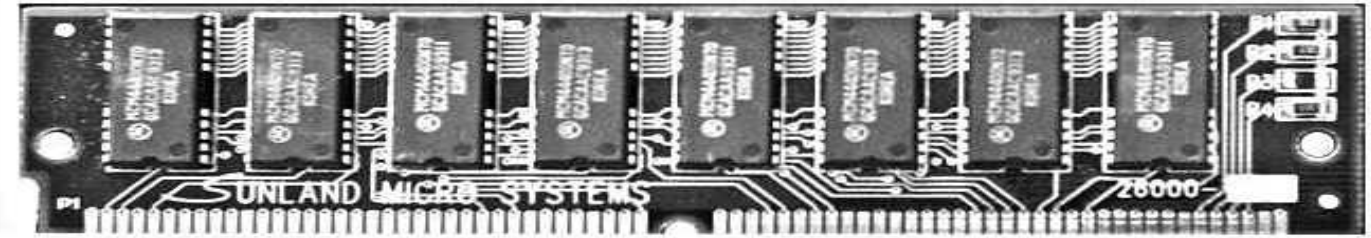
30 pin SIPP

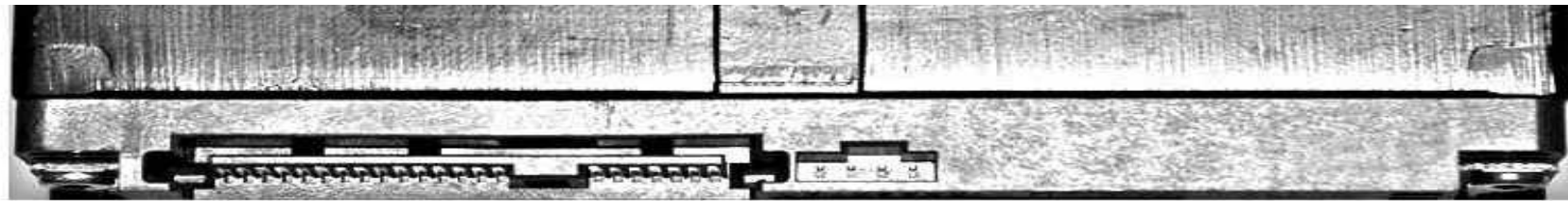


30 pin SIMM

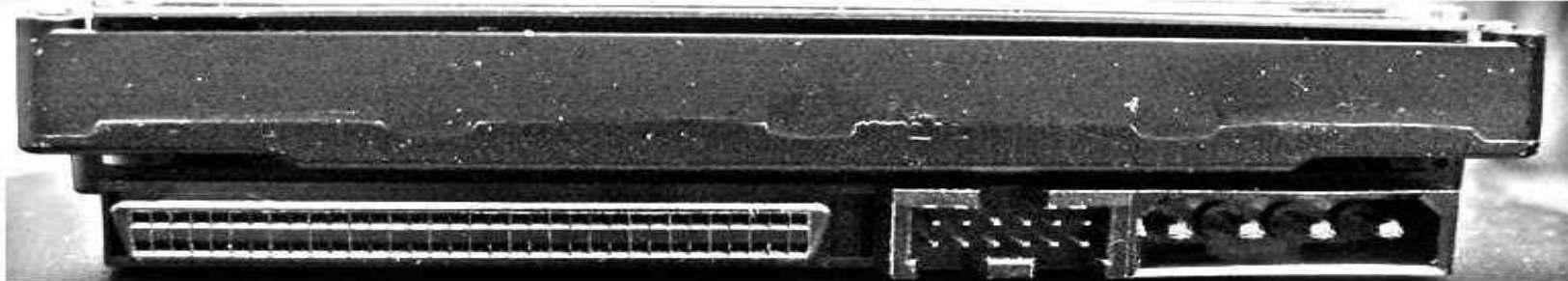


72 pin
SIMM



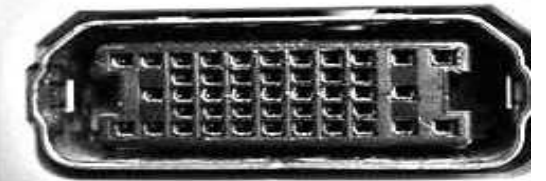


SCSI - SAS - 7 pin (data)

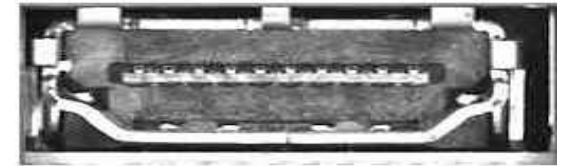


SCSI - DB 68 - 68 pin

Parallel Port/S



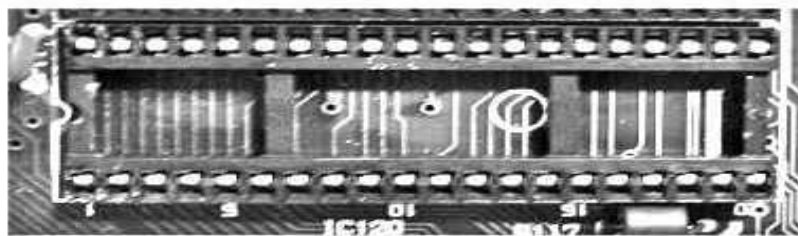
Apple Hi-Density Vid
HDI-45



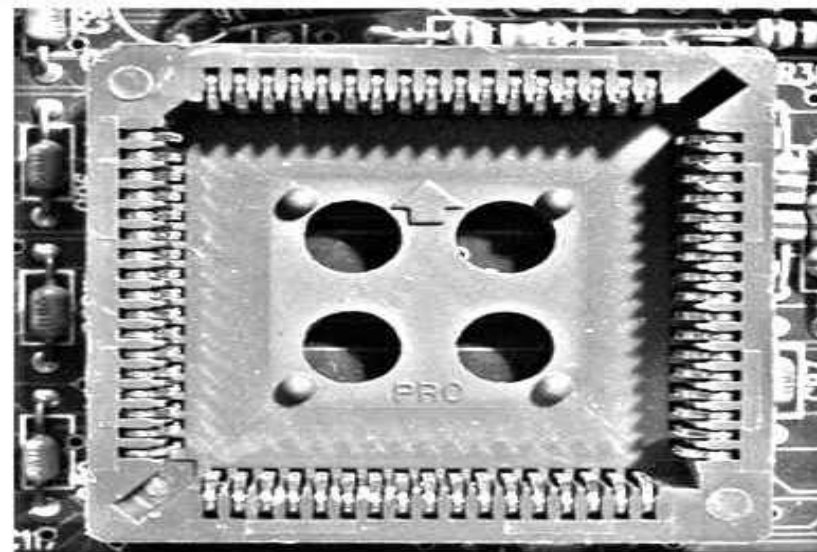
HDMI

CPU Sockets

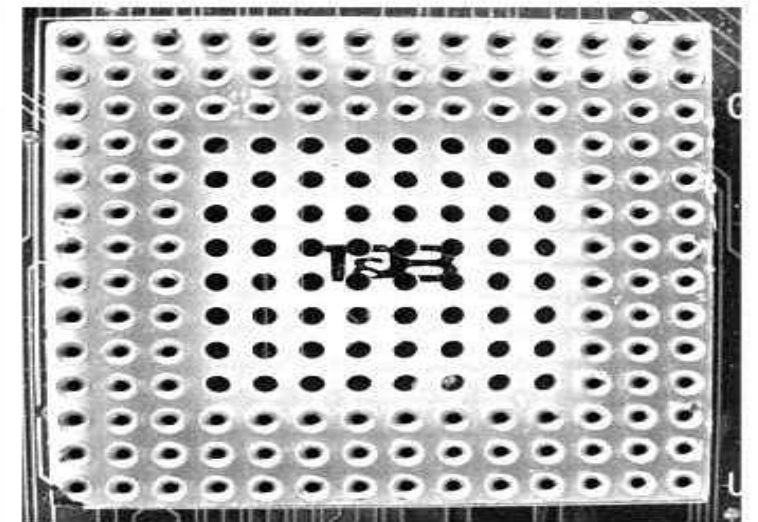
AMD/INTEL:



Pin Grid Array



68 pin PLCC



TS

CSI 1/DB-25F



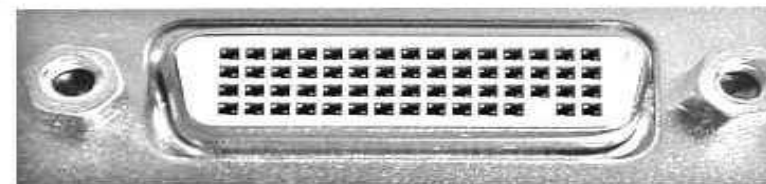
Apple Display Connector - ADC

Mac Video/MIDI /gameport/AUI/DA-15



LFH60 (dual DVI-D)

Mini DisplayPort



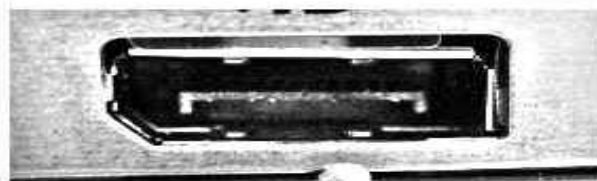
DMS59 (dual DVI-D)

Mini-DVI

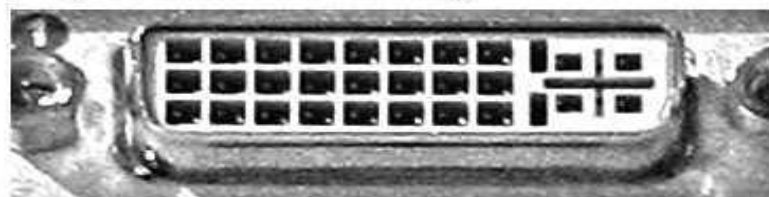
Mini-VGA



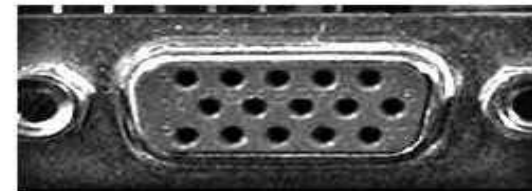
Micro-DVI



DisplayPort



DVI Video



HD-15 VGA/SVGA

AMD:



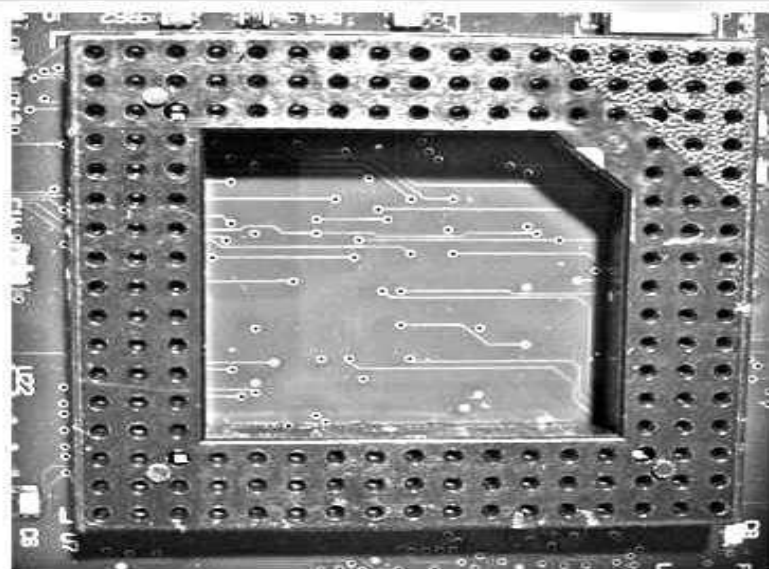
INTEL:



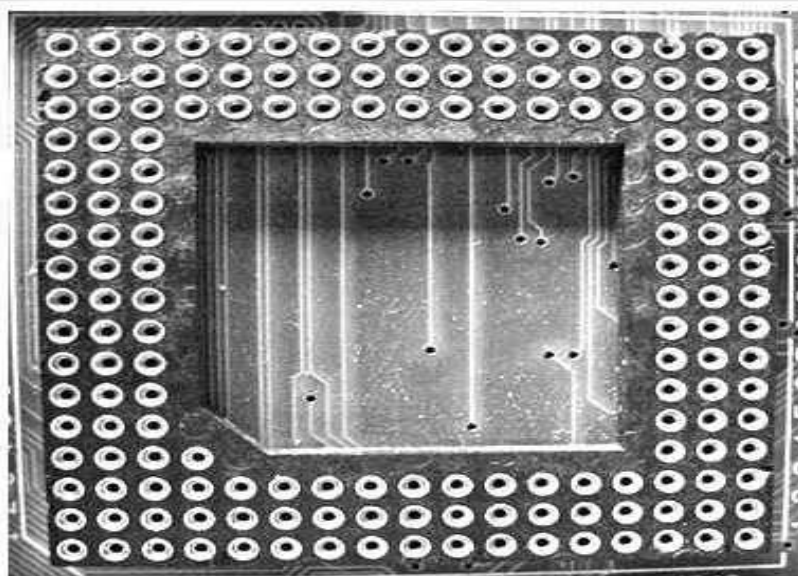
Apple:



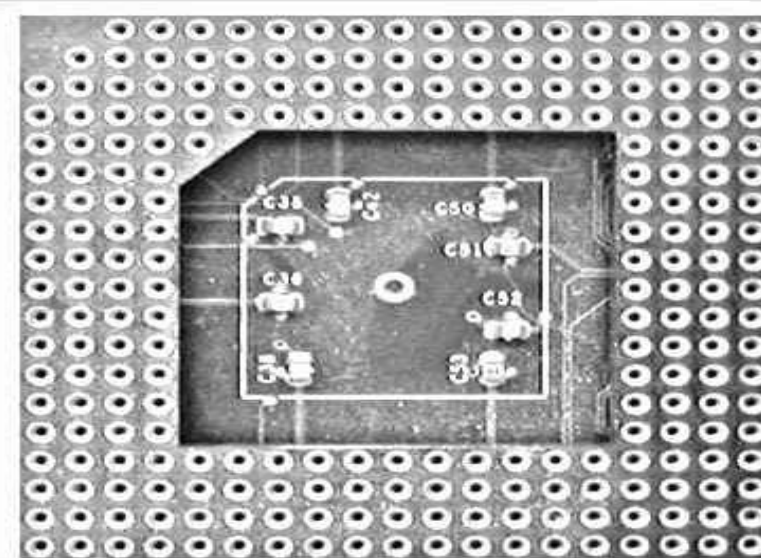
Other:



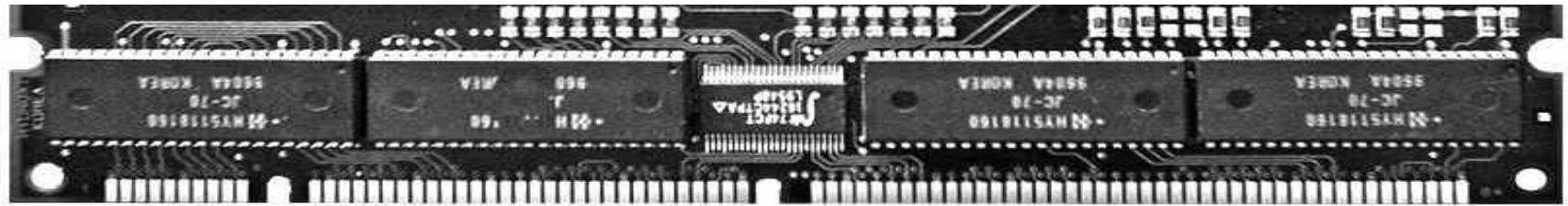
Socket 486



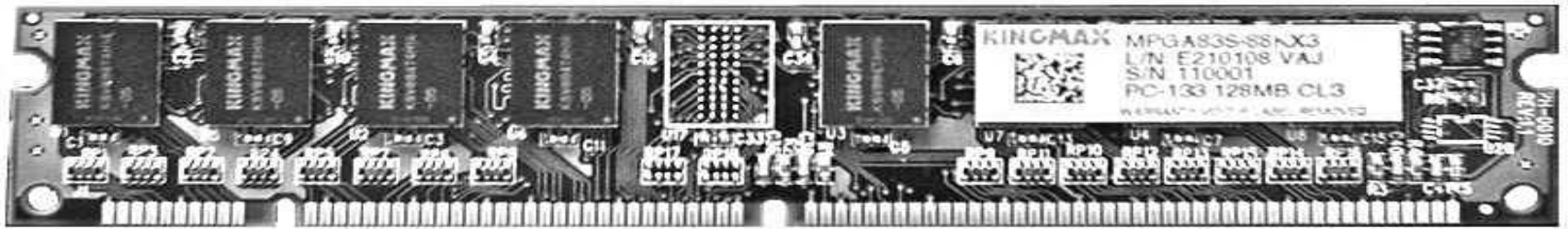
Socket 4



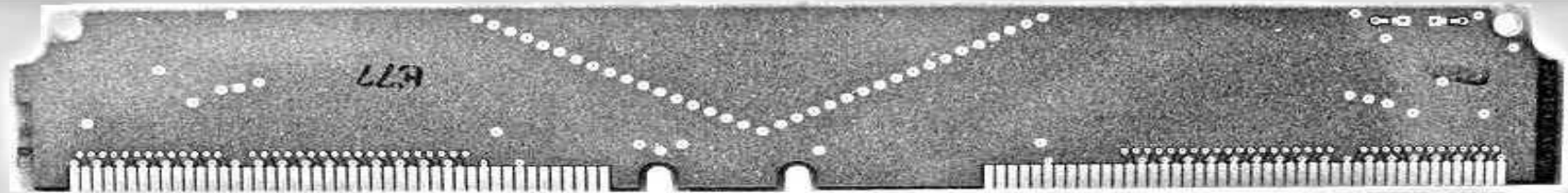
Socket 2



168 pin DIMM



168 pin PC100



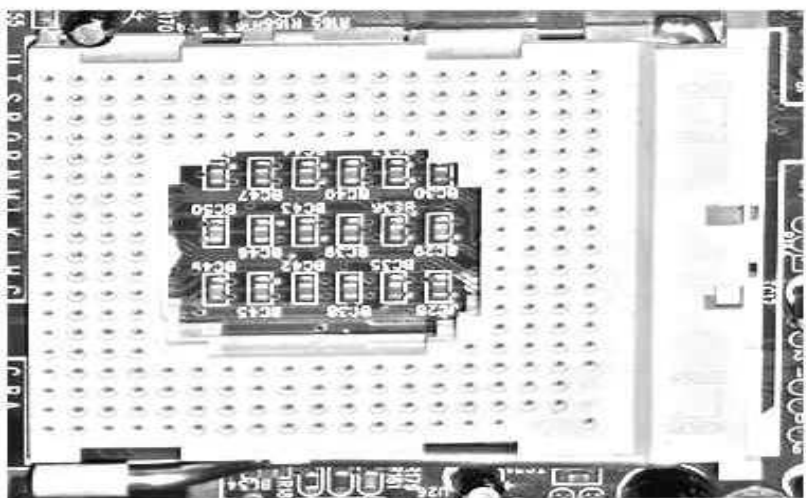
184 pin CRIMM Spacer



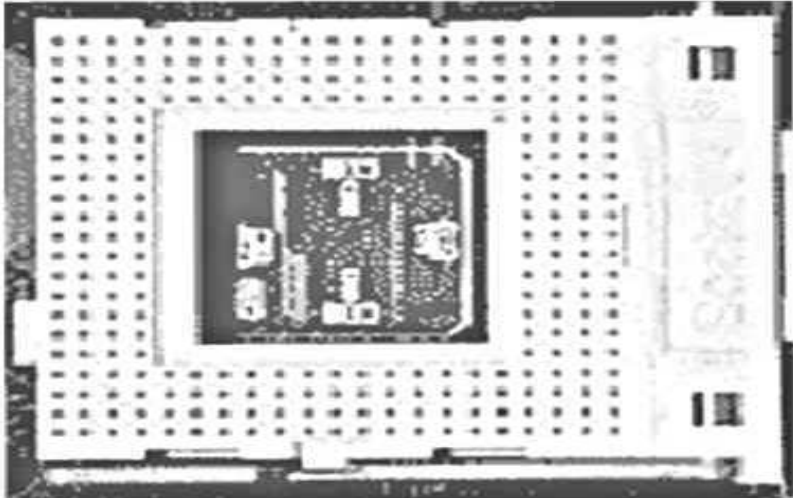
184 pin 16bit RDRAM



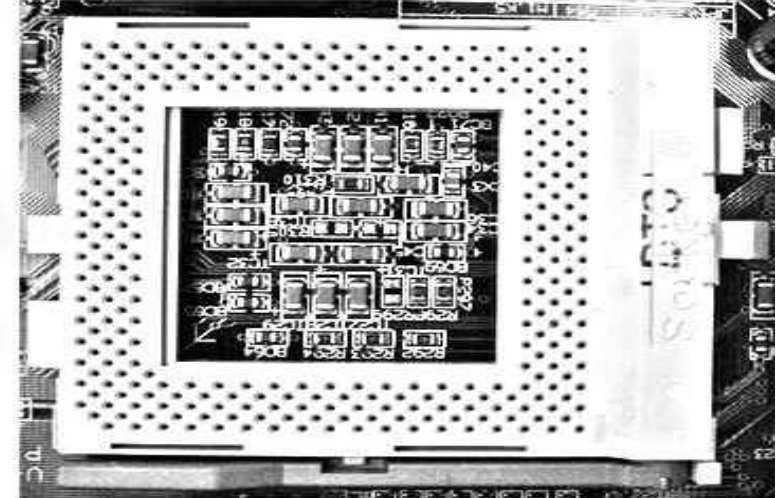
PIN DIP
8086/8088 40 pin



68 pin PLCC
80186, 80286, 80386



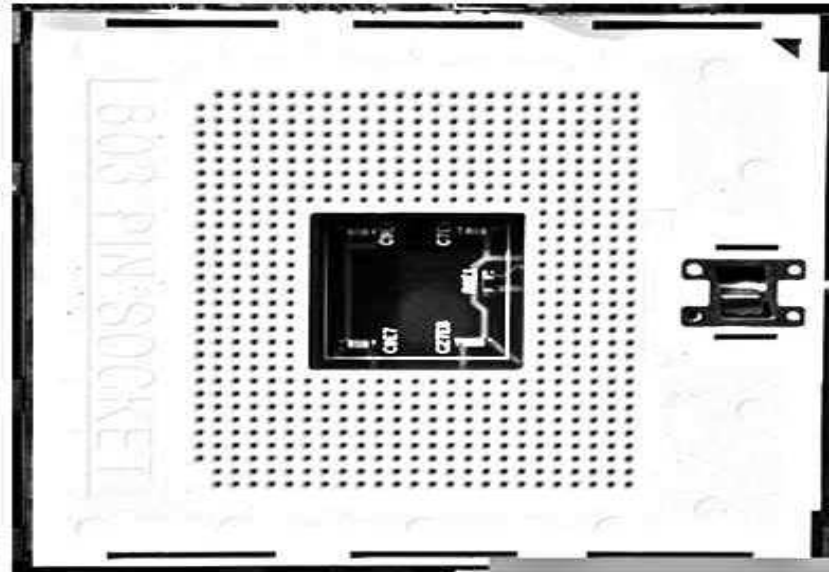
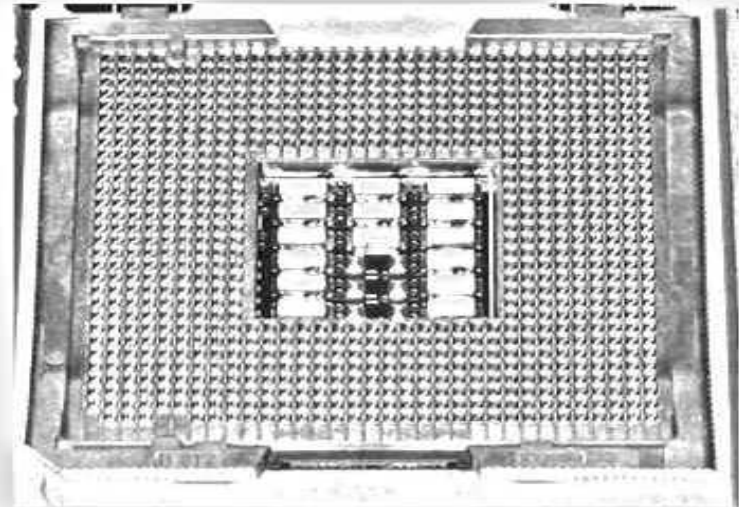
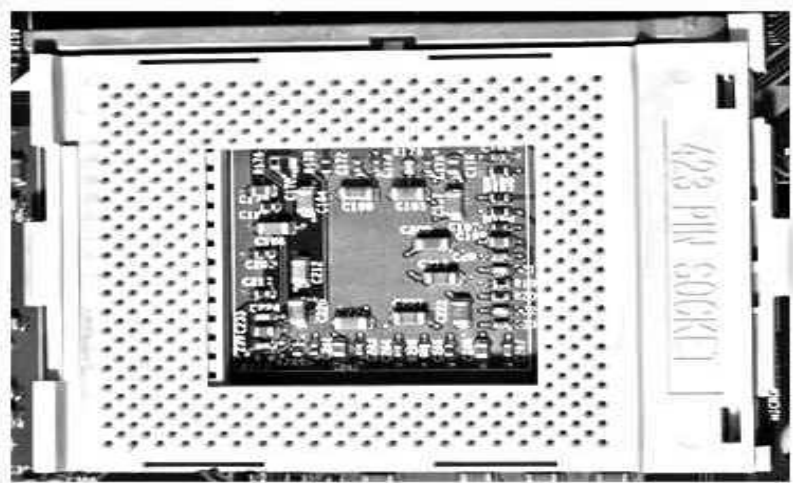
80386
80386 - 132 pin



Socket 3
80486 DX, DX2, DX4, SX, SX2
Pentium overdrive, 5x86 237 pin

Socket 4
Intel Pentium 60/66Mhz 273 pins

Socket 5
Pentium 75-133mhz, K5, WinChip C6
320 pins

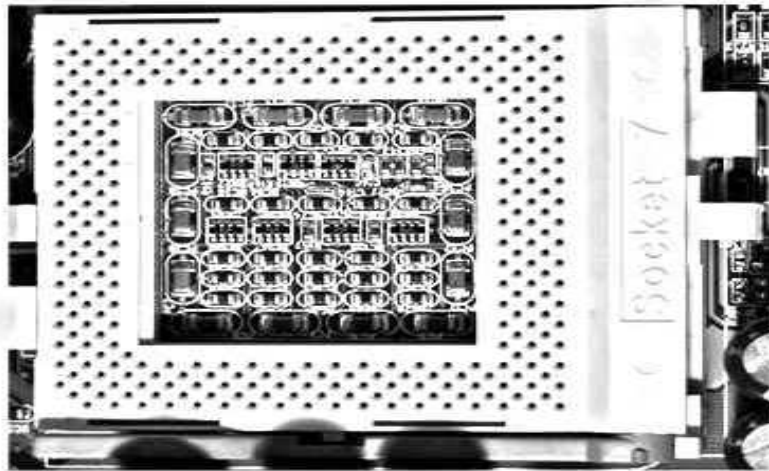


Socket 423

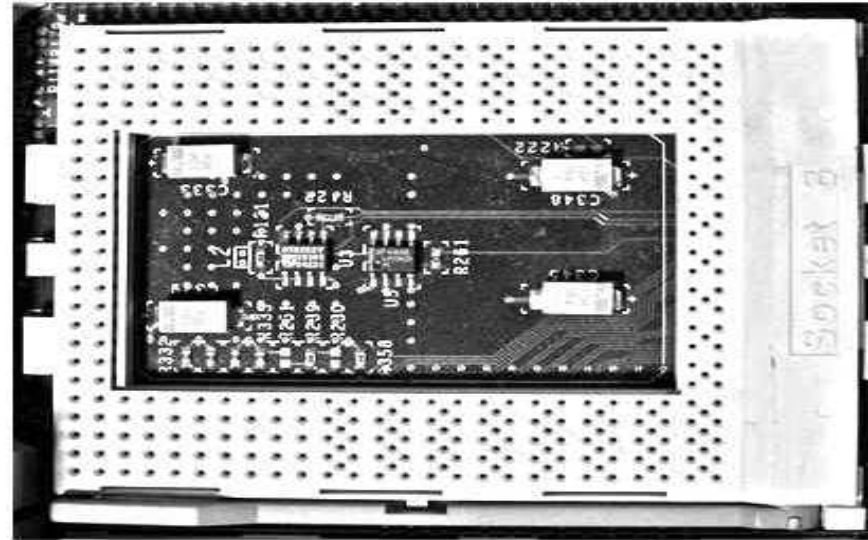
LGA 775 / Socket T
Pentium 4/extreme, Pentium D,

Socket 603

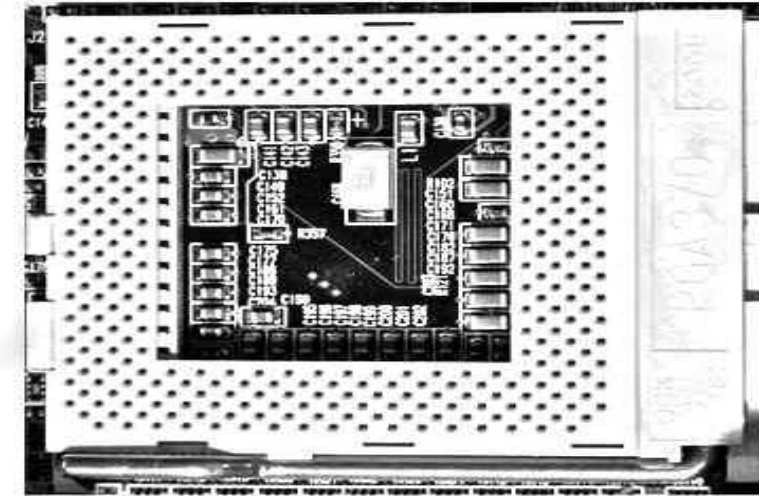
Socket 400
486 DX - 168 pin



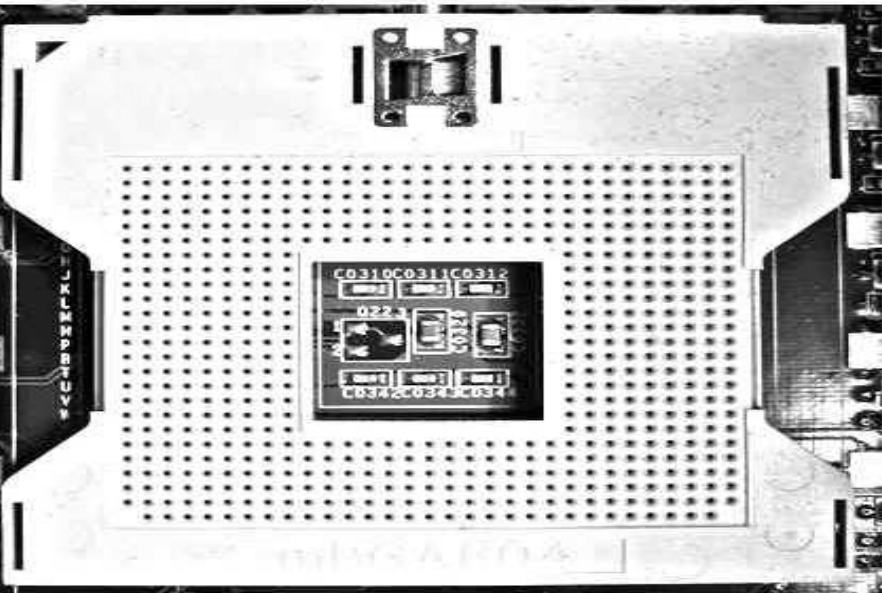
Socket 1
486 DX/DX2/SX/SX2 - 169 pins



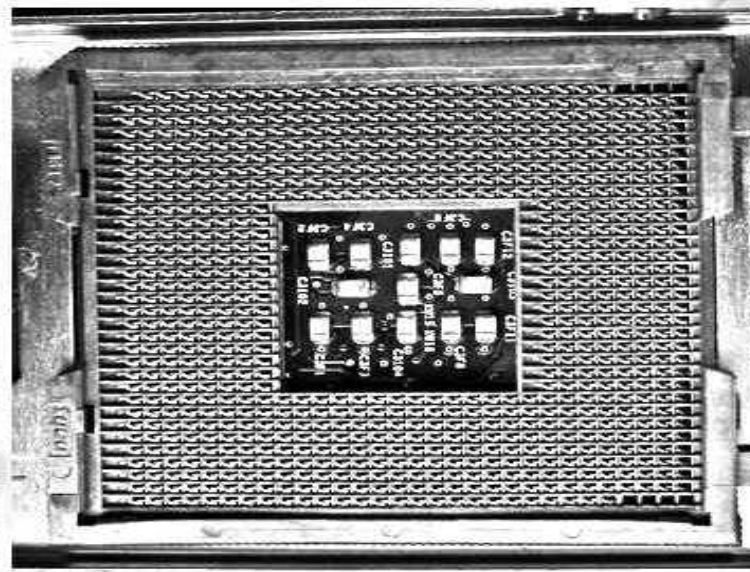
Socket 2
80486 DX, DX2, SX, SX2,
Pentium Overdrive - 238 pin



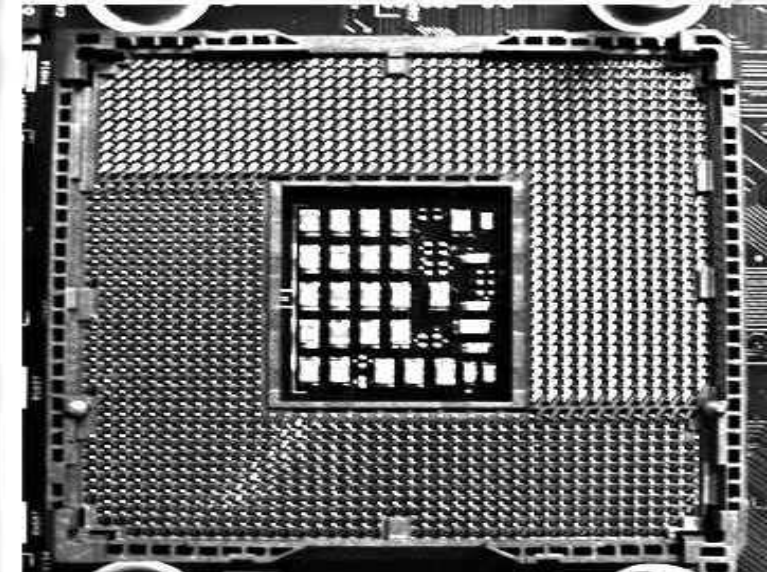
Socket 7
Intel Pentium, MMX, AMD K5, K6,
6x86MX, MII - 321 pin



Socket 8
Pentium Pro/Pentium II Overdrive - 387 pin



Socket 370
Pentium III, Celeron, Cyrix, VIA C3
370 pins



Socket 604

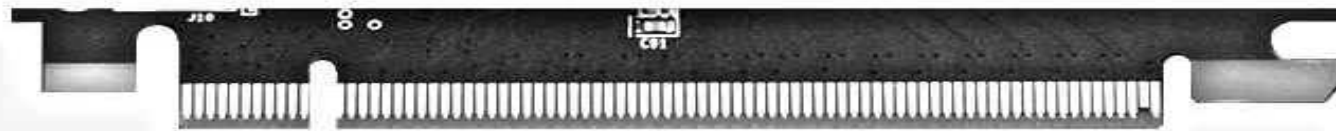
LGA 771 / Socket J

LGA 1366 / Socket B

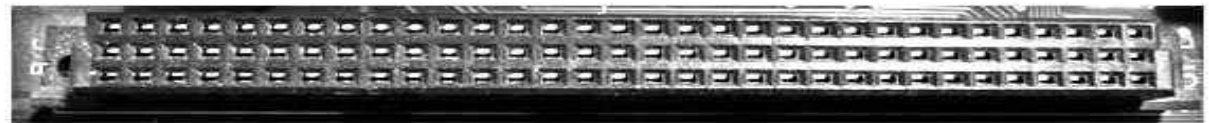
PCIe x1



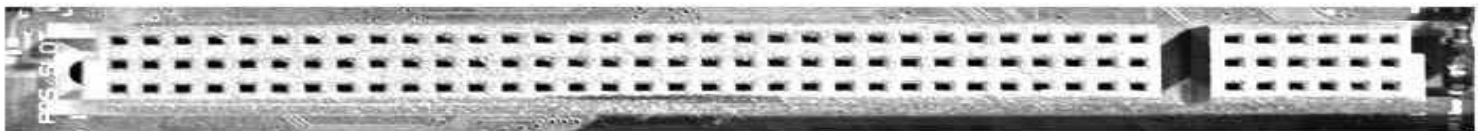
PCIe x16



Desktop Card Slots



NuBus



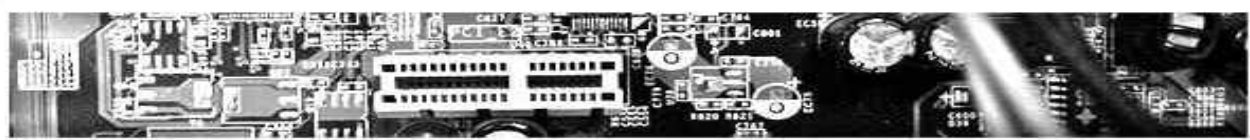
LC Processor Direct Slot - LC PDS



Processor Direct Slot - PDS



601 Processor Direct Slot/Personality Slot

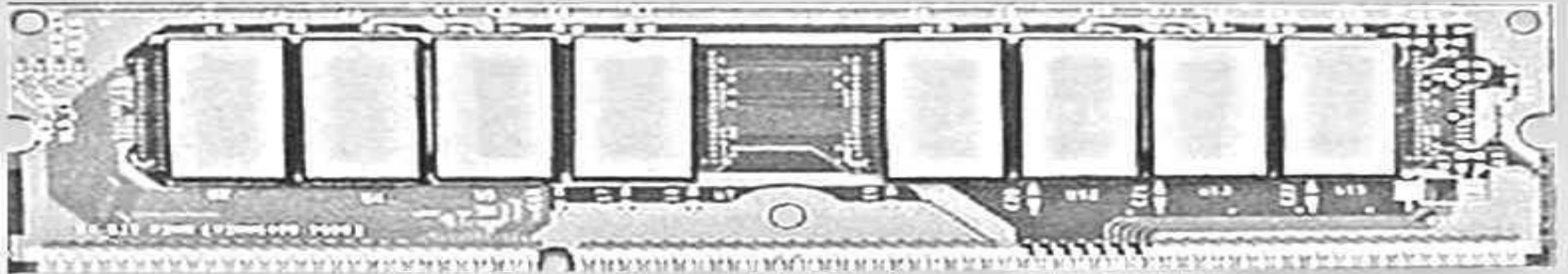


Peripheral Component Interconnect Express - PCIE x1

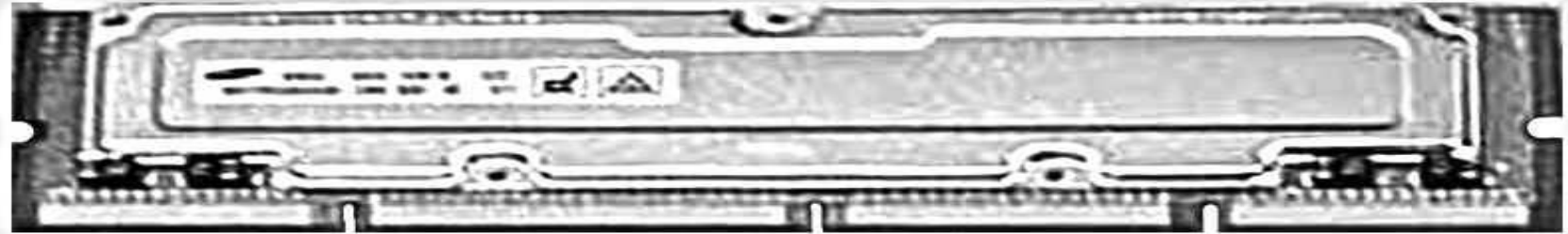


232 pin 32bit RDRAM

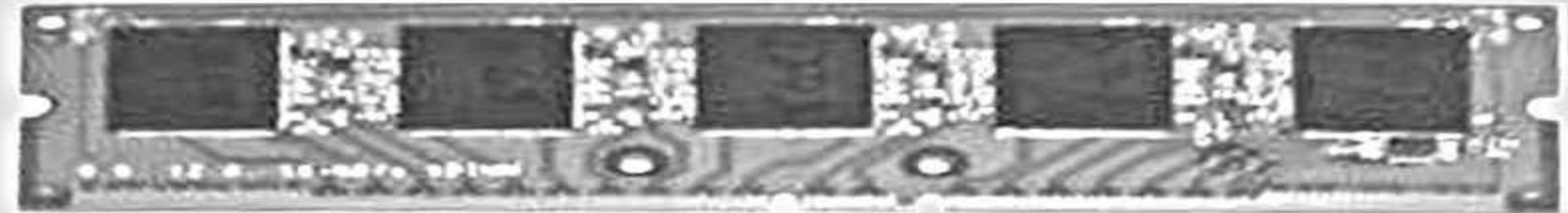
RAMBUS



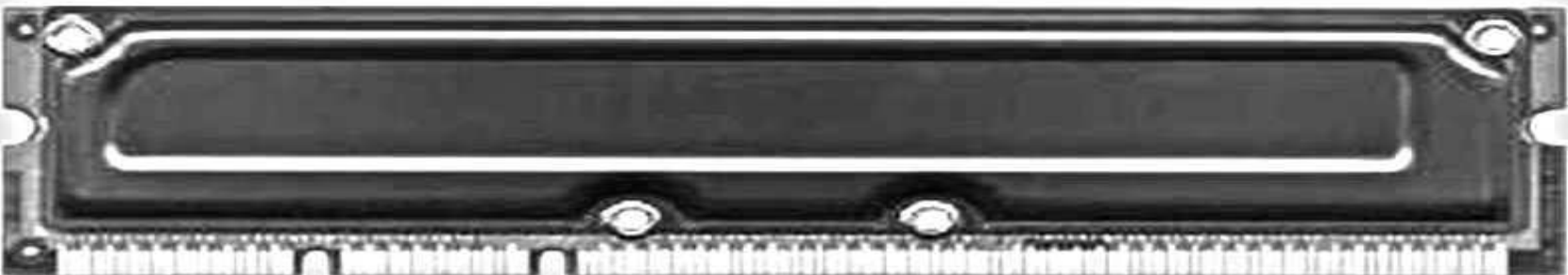
326 pin 64bit RDRAM



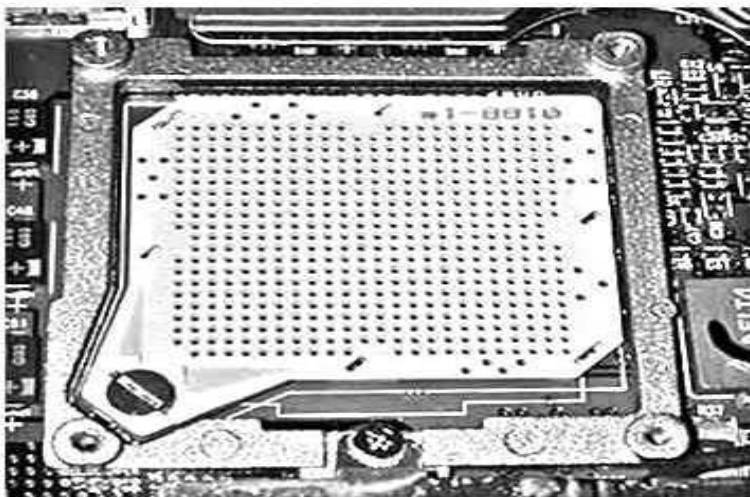
64bit RDIMM



XDIMM

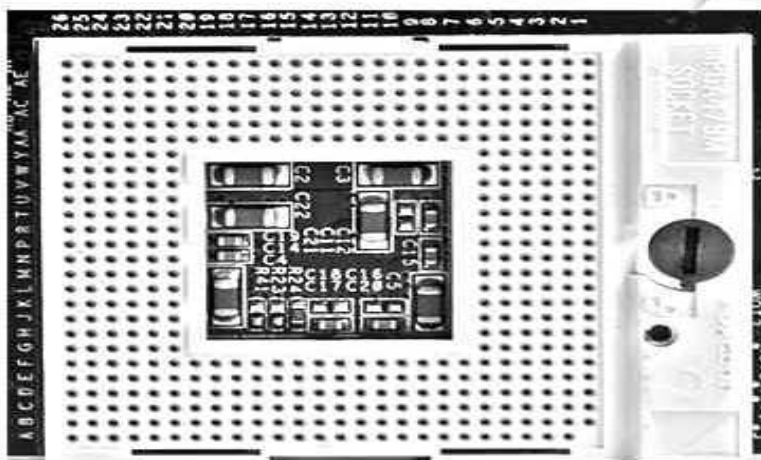


SECRET 720
Pentium 4 - 423 pins



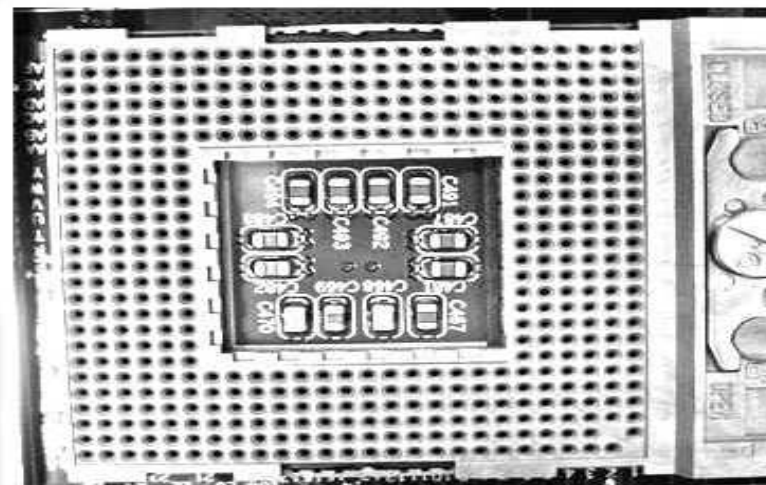
Socket 495 / MicroPGA 2
Mobile Celeron/P3 - 495 pin

Celeron D, Core 2 Duo,
Core 2 Extreme, Celeron, Xeon 3000
Core 2 Quad - 775 pins



Socket 479 / mFCPGA / mPGA479M
Pentium M, Celeron M, VIA C7-M
479 Pins

Intel Xeon, Mobile Pentium 4 - 603 pins



Socket 478v2 / mPGA478MB
P4, Celeron /D/M, Core Duo/Solo
P4 Extreme, Pentium M, Mobile Celeron
Mobile Pentium III/4 - 478 pins

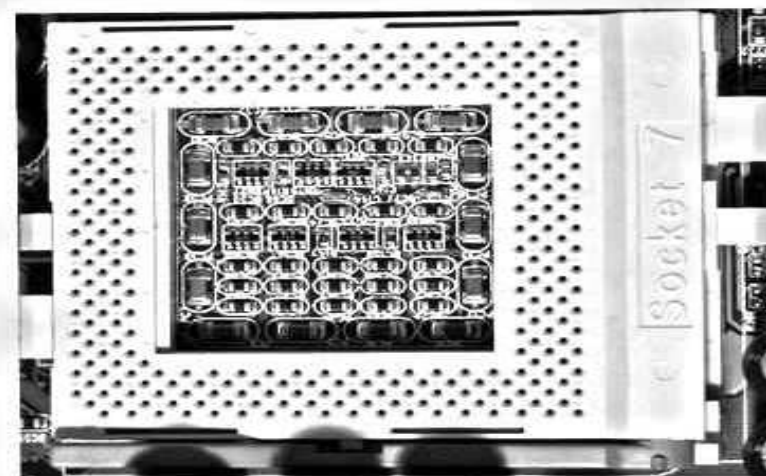
Future

LGA 715 / Socket H
replaces Socket T/LGA 775
715 pins

Future

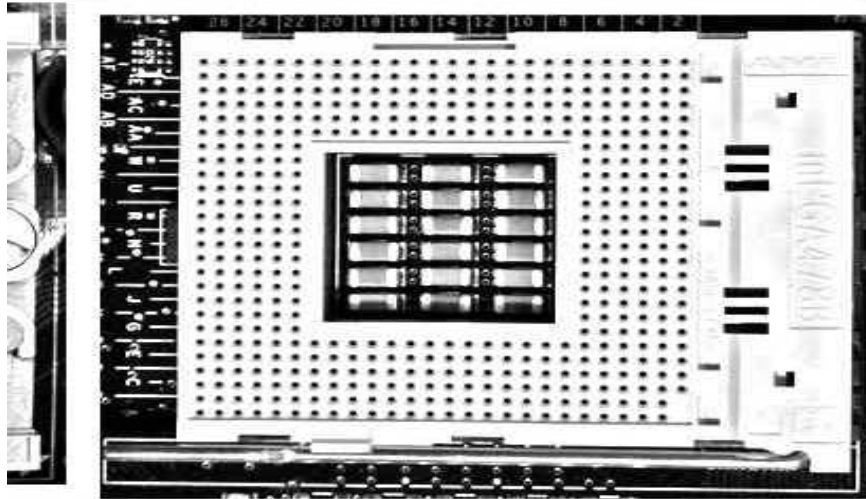
Release date:
Q2 2009

LGA 1160 / Socket H1
1160 pins



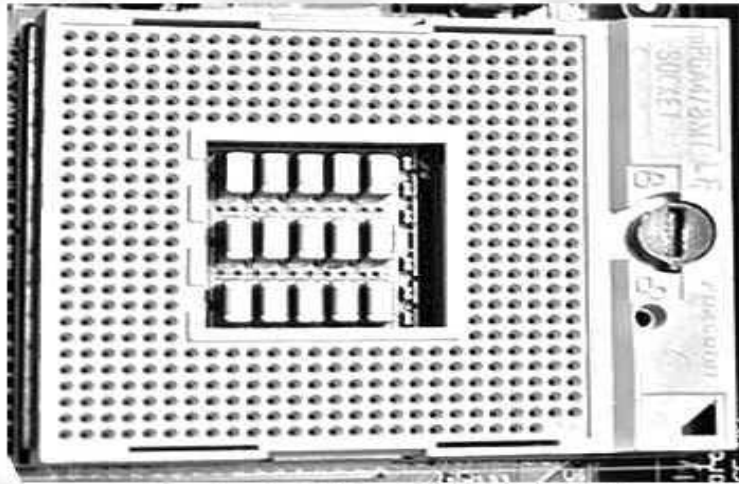
Super Socket 7
AMD K6-2, K6-III
321 pins

Intel Xeon - 604 pins



Socket 478/Socket M(laptop)
P4, Celeron /D/M, P4 Extreme.
Laptop: Core solo/duo, Core 2 Duo
Celeron M - 478 pins

Intel Xeon - 771 pins

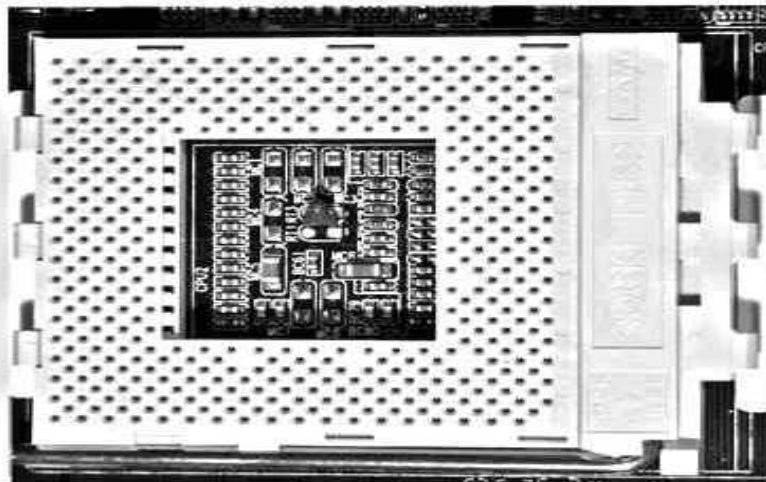


Socket P / mPGA478MT
Core 2 Duo, Pentium Dual-Core, Celeron M
478 pins

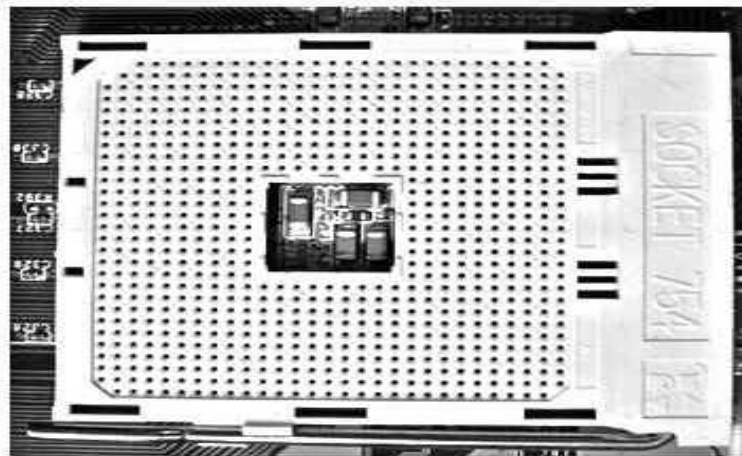
Bloomfield core - 1366 pins



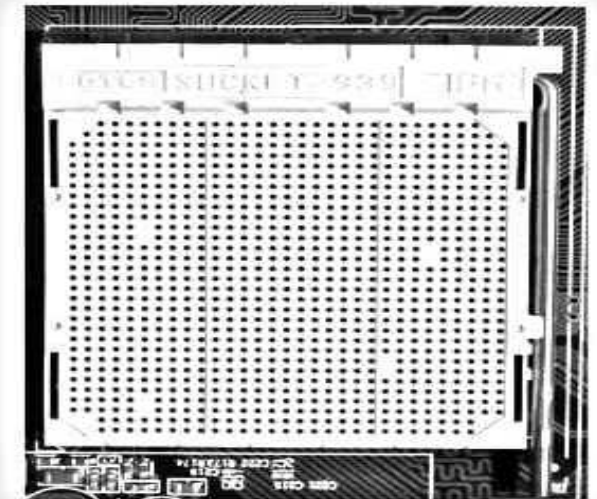
mPGA989
989 pins Q2 2009



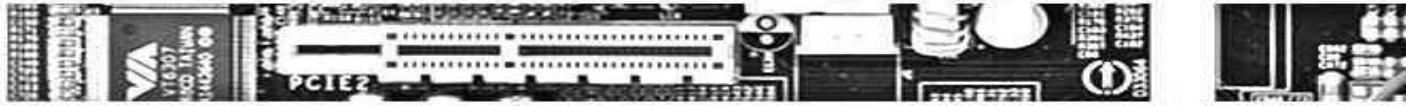
Socket A / Socket 462
Athlon, Duron, Athlon XP, Athlon XP-m
Athlon MP. Sempron



Socket 754
Athlon 64, Sempron, Turion 64
754 pins



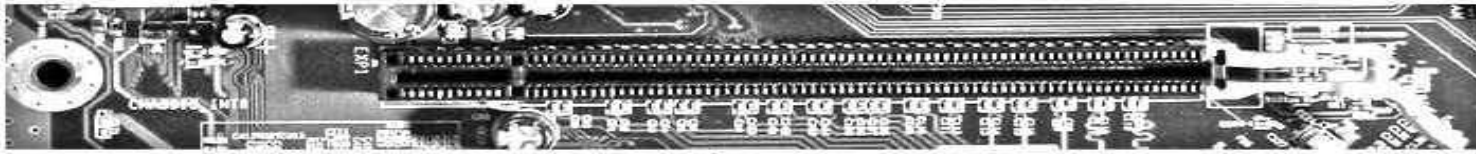
Socket 939
Athlon 64, Athlon 64 FX,
Athlon 64 X2. Opteron 10 series



Peripheral Component Interconnect Express - PCIe x4



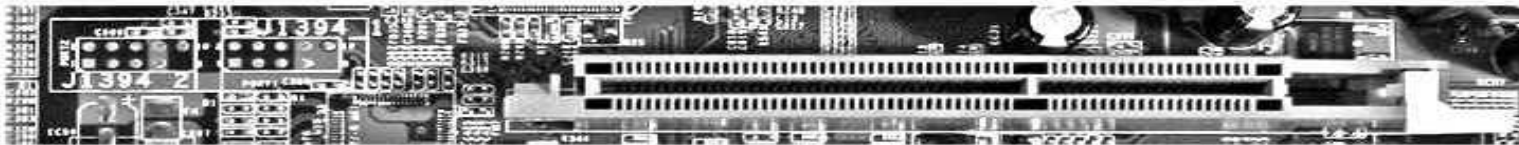
Peripheral Component Interconnect Express - PCIe x8



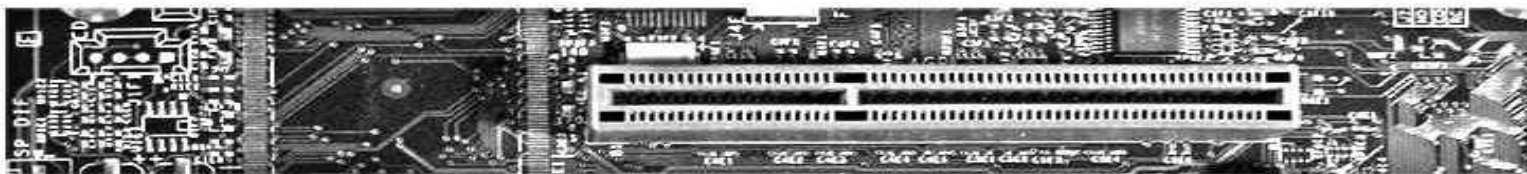
PCIe x16 / PCIe 2.0 x32



Accelerated Graphics Port - AGP Universal



Accelerated Graphics Port - AGP 1.5volt



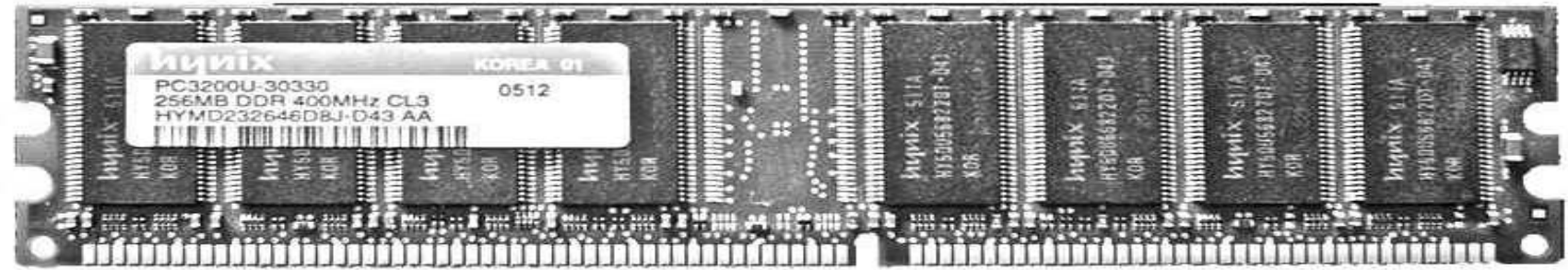
Accelerated Graphics Port - AGP 3.3volt



Accelerated Graphics Port - AGP Pro 1.5volt

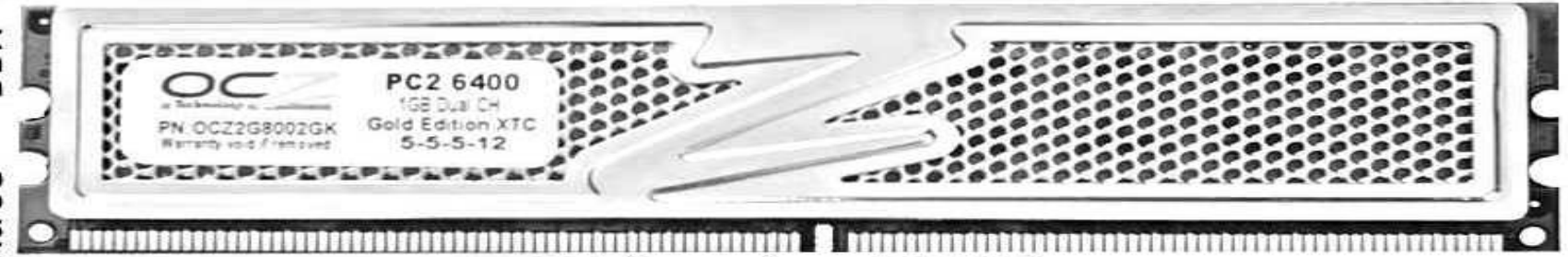
Motherboard

XDR

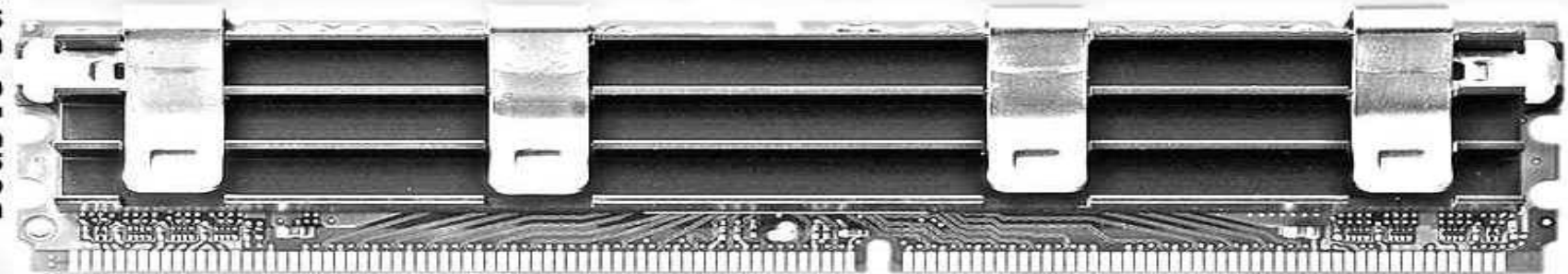


184 pin DDR

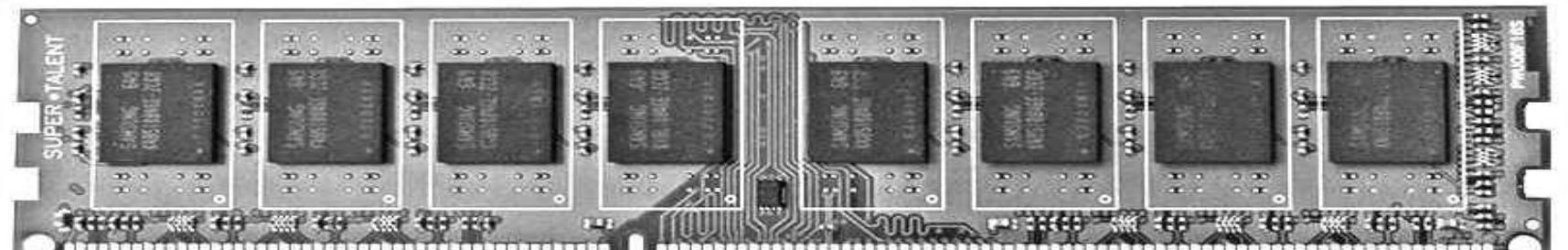
Double Data Rate - DDR

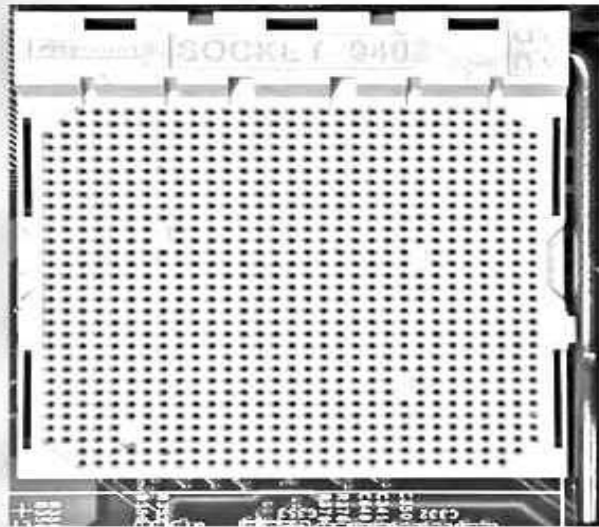


240 pin DDR2

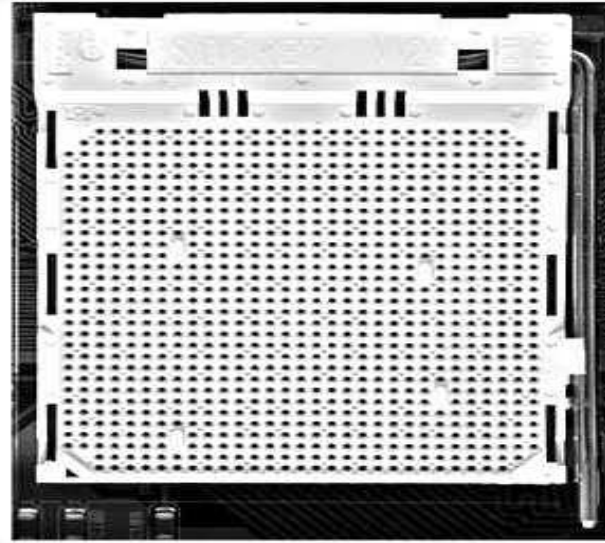


240 pin DDR2 FB-DIMM

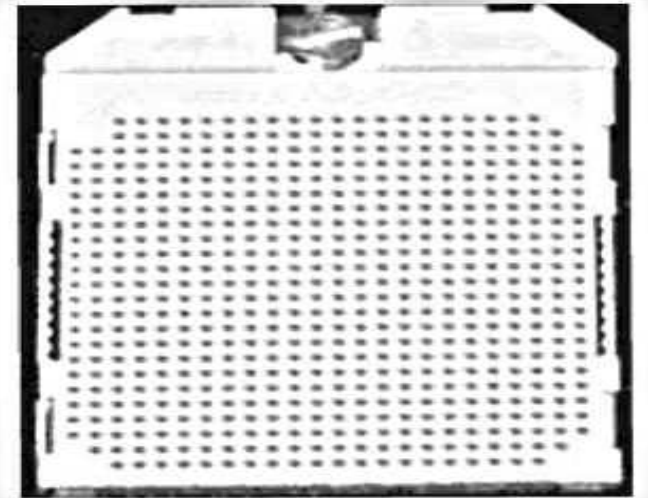




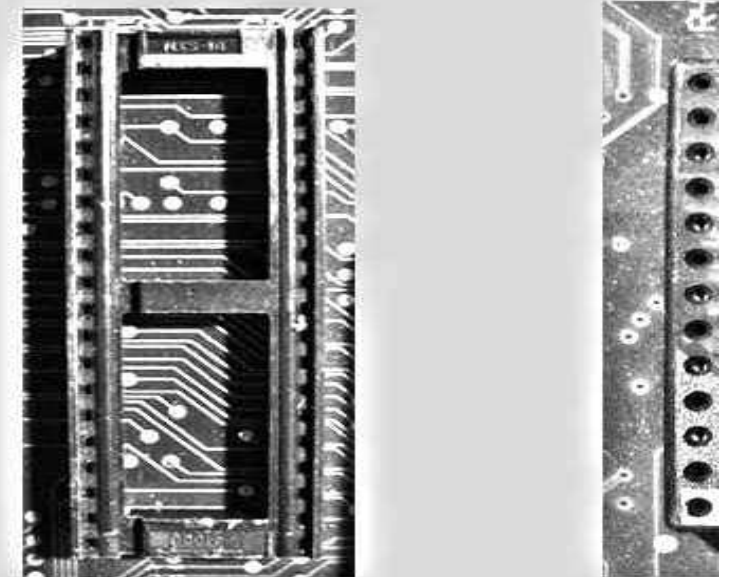
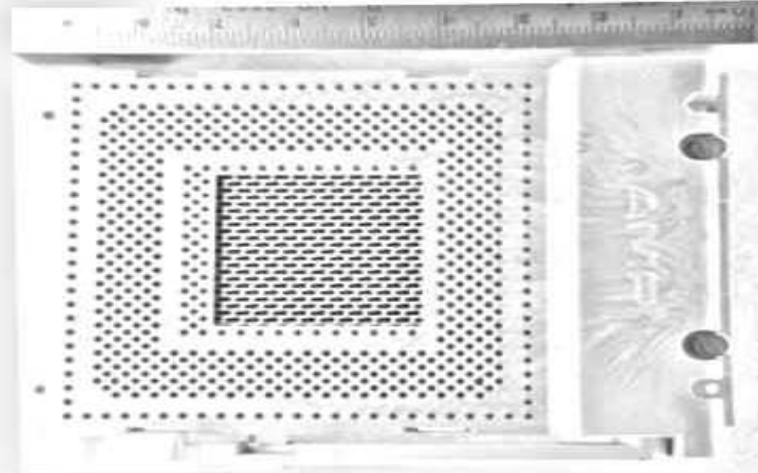
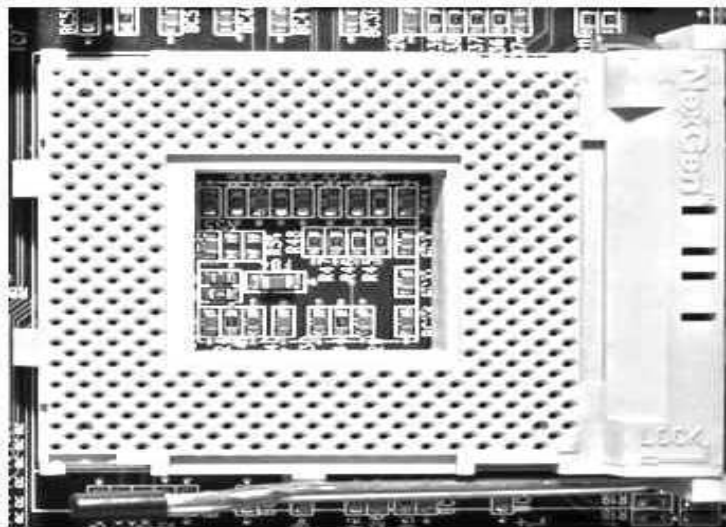
Socket 940
Opteron 2, Athlon 64 FX
940 pins



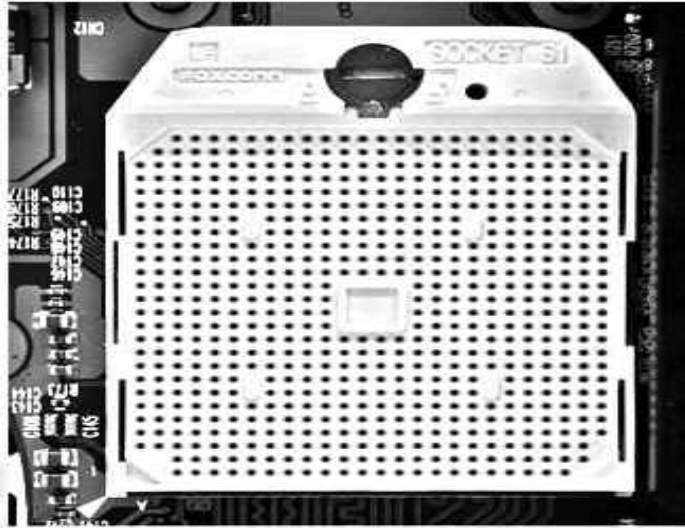
Socket AM2/AM2+
Athlon 64/FX/X2, Opteron, Sempron (AM2)
Phenom (AM2+) - 940 pins



Socket 563 / Socket A compact
Mobile Athlon XP-M
563 pins

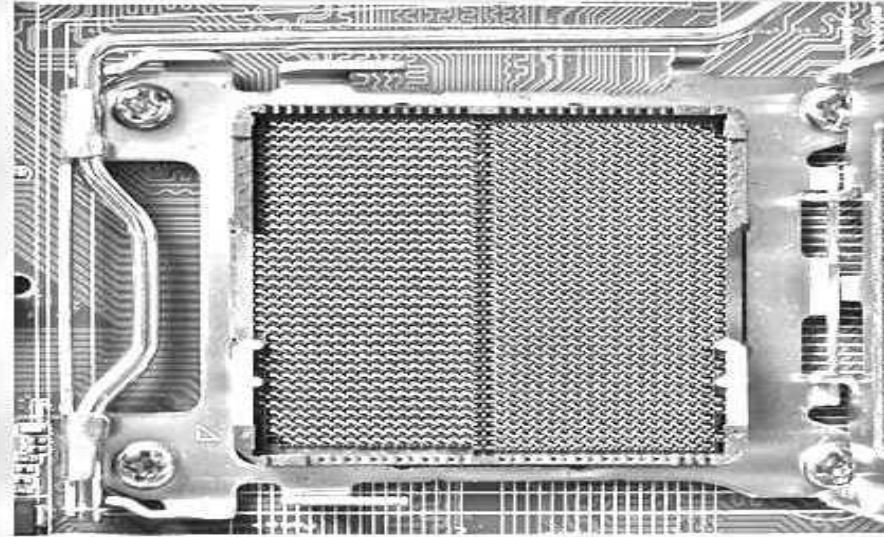


453 pins



Socket S1
Truion 64/X2, Athlon Mobile, Sempron
638 pins

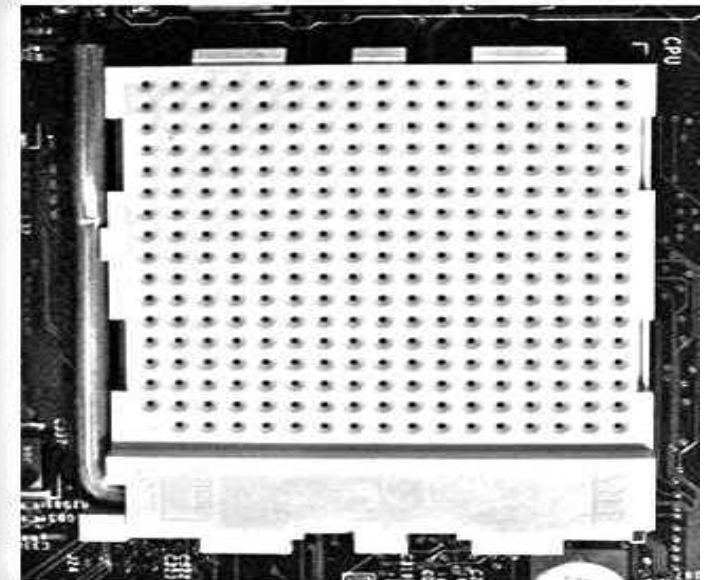
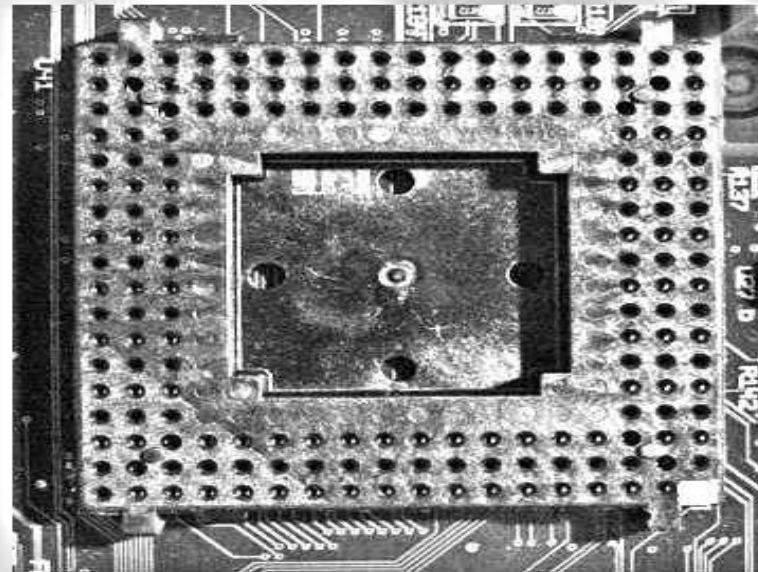
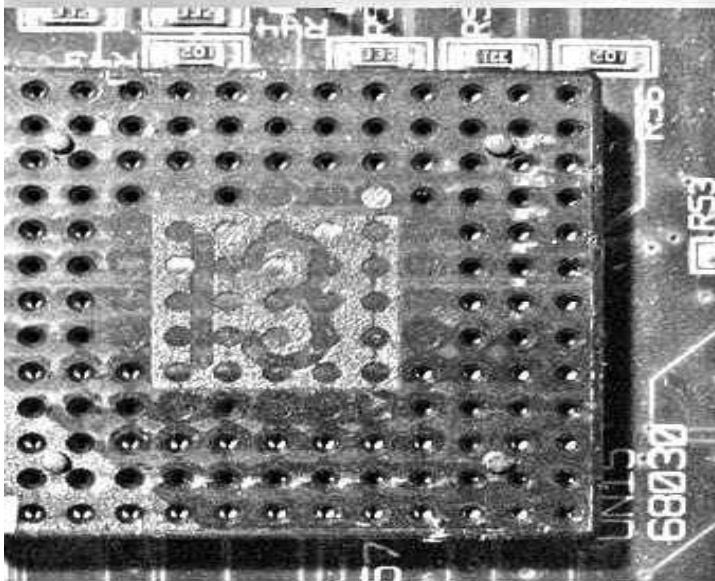
939 pins



Socket F / Socket 1207
Opteron 2, Athlon 64 FX (7x only)
1207 pins

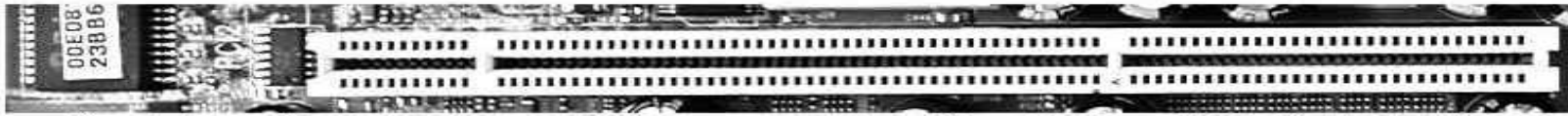


Socket G34
Next Gen AMD processor socket
1974 pins

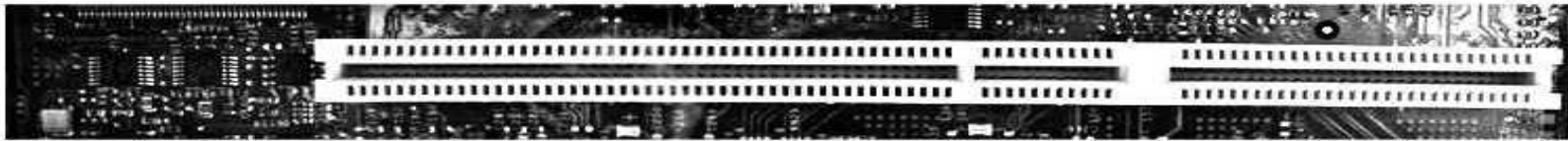


edge

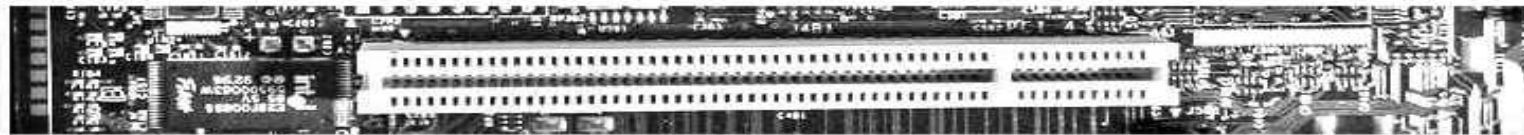
Accelerated Graphics Port - AGP Pro 1.5volt



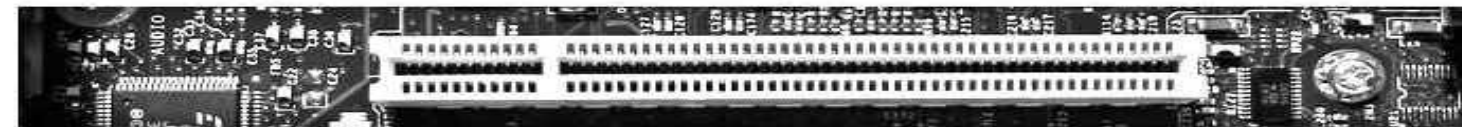
Peripheral Component Interconnect eXtended - PCI-X 3.3volt



Peripheral Component Interconnect eXtended - PCI-X 5volt



Peripheral Component Interconnect - PCI 5volt



Peripheral Component Interconnect - PCI 3.3volt



Communications/Network Riser - CNR



Audio/Modem Riser - AMR



Advanced Communication Riser - ACR

240 pin DDR3



S-ATA Power
5 overall pins



Molex
4 Pins



Berg 4 pins
Floppy drive power

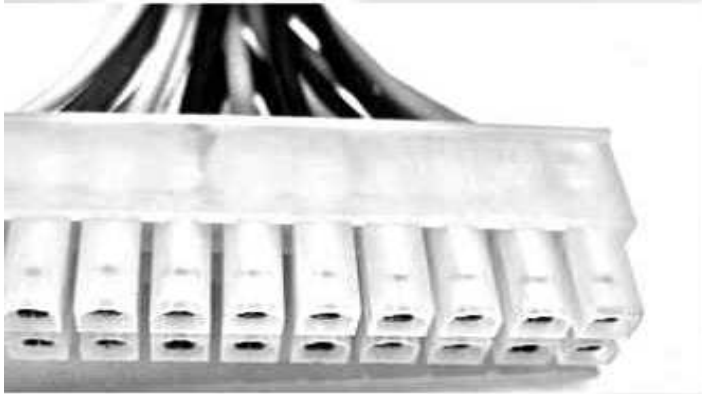


Socket 463 / Socket NexGen
Nx586 - 463 pins

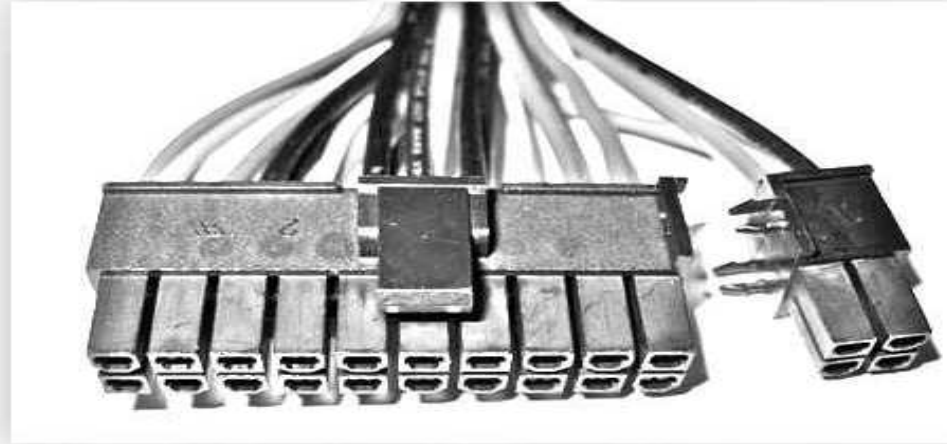
Socket 499
DEC Alpha 21164a - 499 pins

65C02
40 pins

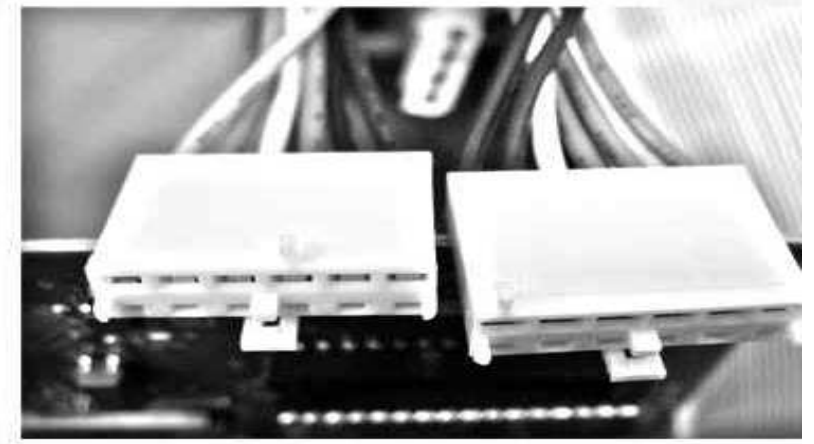
Power Conn



ATX - 20 pins
Power connector



ATX 2.2 - 20 + 4 pins
Power connector



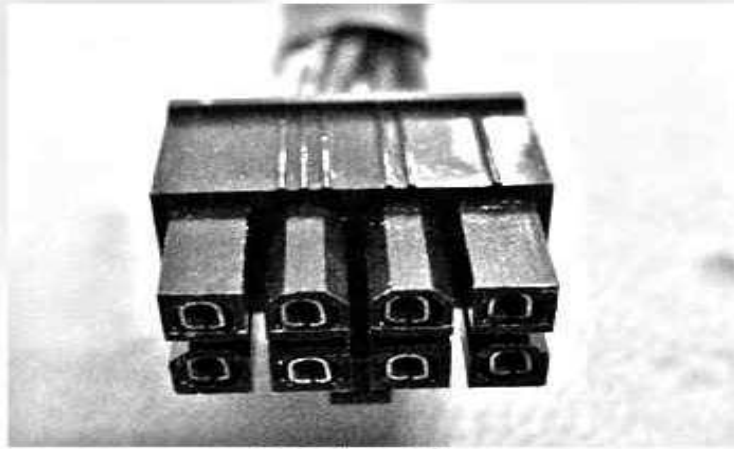
AT power - pair
for AT motherboards

Motorola 68030
128 pins

Motorola 68040
179 pins

G3/G4 ZIF
288 pins

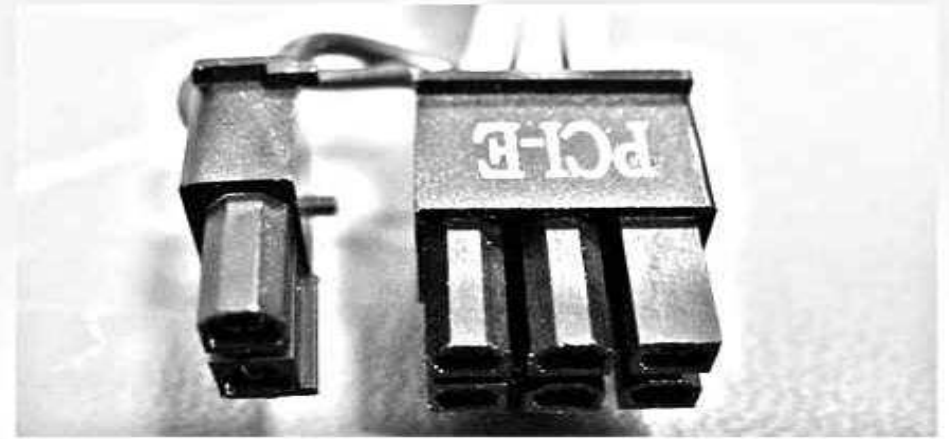
ectors



CPU 12v
8 Pins



EPS 12v
4 Pins



PCI-e Power
6 or 8 pins



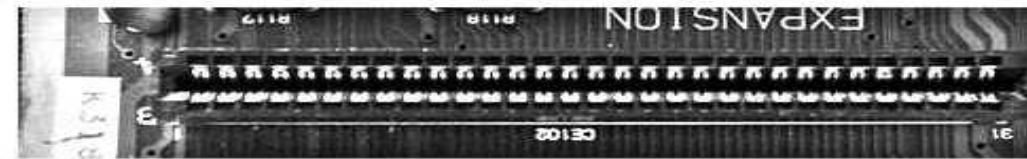
ISA 16 + VLB (VESA)



Extended Industry Standard Architecture - eISA



Industry Standard Architecture - ISA 16bit



Industry Standard Architecture - ISA 8bit/PC Bus